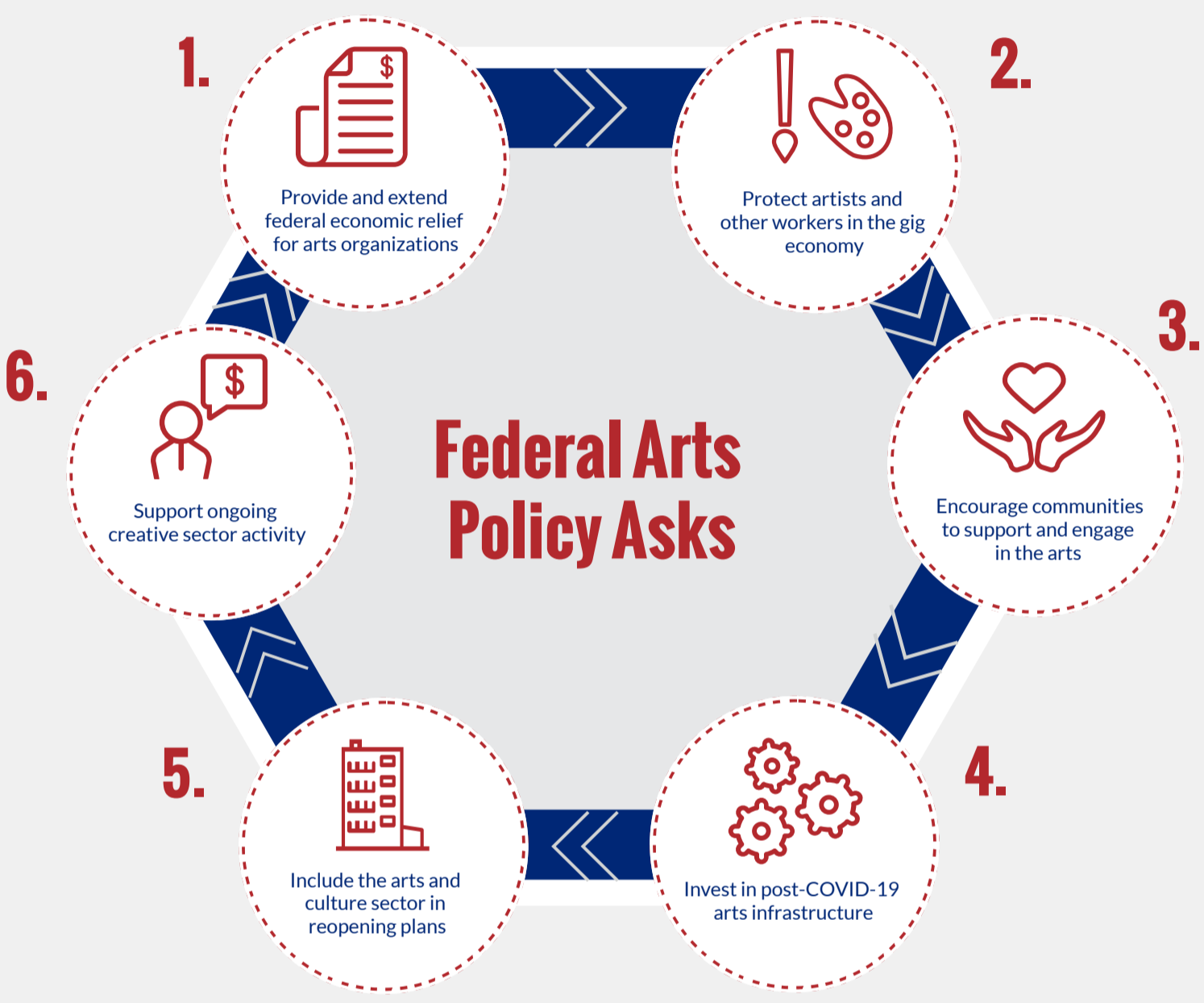
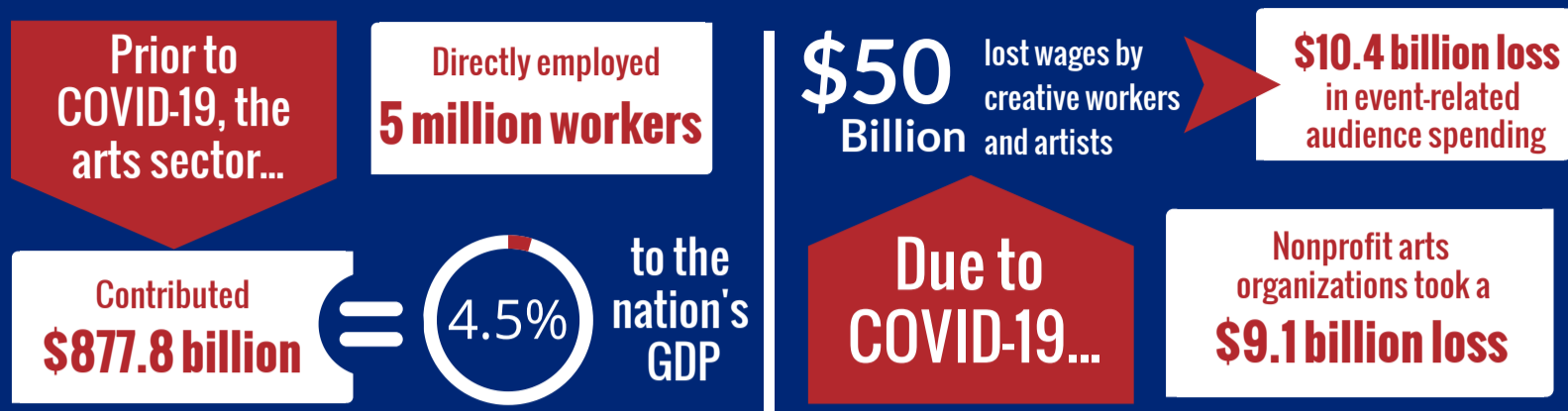


Arts organizations, artists, and the broader creative workforce are vital contributors to the nonprofit sector, are essential to the economy, vitality, and well-being of the communities they serve, and they must be supported by all forms of pandemic relief.



1. Provide and extend economic relief

- Expand, extend, and recapitalize **Payment Protection Program (PPP)** resources
- Provide nonprofits with loan forgiveness through the **Main Street Lending Program** and **Economic Stabilization Fund**
- Fully fund the **Economic Injury Disaster Program**

2. Protect artists and other workers

- Expand the **duration of pandemic unemployment benefits**
- **Expand access to health coverage and care** for those with atypical employment structures
- Provide assistance for single- and multi-employer pension funds to protect artists' retirement security

3. Encourage community arts support

- Boost charitable giving by **removing the \$300 cap** on above-the-line tax incentives for non-itemizers
- Maintain the CARES Act removal of Adjusted Gross Income limitation on deducting donations
- Adopt an **emergency broadband benefit** to foster equitable participation in online cultural activities

4. Invest in safe arts infrastructure

- **Provide eligibility for arts facilities in infrastructure investments** to renovate, refurbish, and adapt to post-COVID-19 public health protocols.
- **Use arts-based approaches to public works** and community development initiatives

5. Include the arts in reopening plans

- Include the arts sector in consideration of **public health** and **workplace safety policies**
- Ensure the **arts are considered in business interruption insurance** and **liability policy** discussions

6. Keep supporting the creative sector

- Approve **substantial funding for the NEA, NEH, and IMLS** as they administer COVID-19 relief
- Bolster **federal funding for arts education**
- Integrate provisions from the CREATE (S. 650) and PLACE (S.3232) Acts to boost creative economy workforce